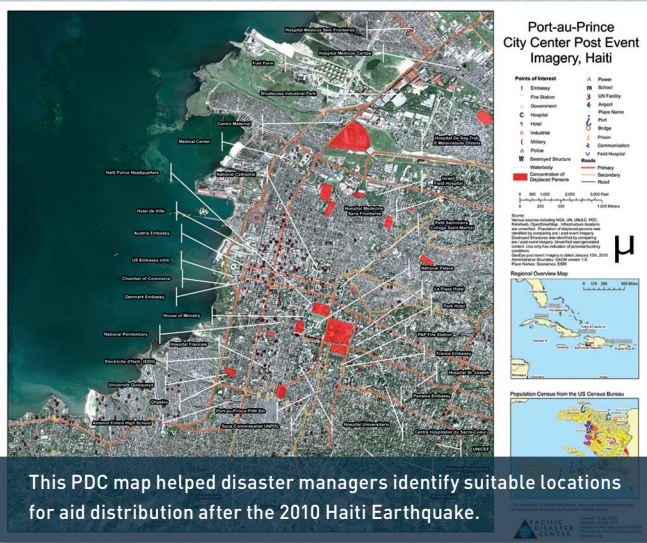


# DISASTER EVENT SUPPORT



This PDC map helped disaster managers identify suitable locations for aid distribution after the 2010 Haiti Earthquake.

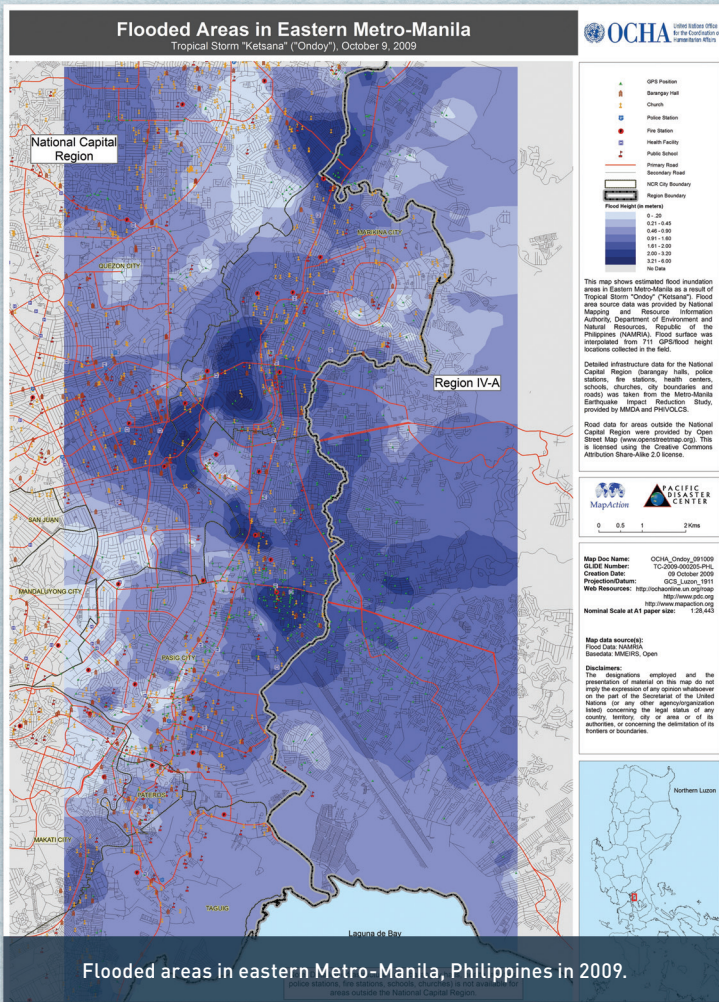
## Haiti: 2010 Earthquake

On January 10, 2010, a magnitude-7.0 earthquake struck the Republic of Haiti, claiming more than 315,000 lives and leaving over a million people homeless. PDC immediately produced and disseminated maps that highlighted populated locations and critical infrastructure. These maps provided rapid assessments to emergency responders. PDC analysts also collaborated with U.S. agencies, the U.N., and other volunteer organizations to determine the location of impromptu refugee camps, identify more suitable sites, share the status of operational hospitals, and mapped the subsequent cholera outbreak. These data were used by responders to help establish aid distribution centers.



## Providing Critical Information when Disaster Strikes

When a disaster strikes, timely and accurate information can save lives. In addition to its mission to reduce disaster impacts, Pacific Disaster Center (PDC) regularly supports humanitarian assistance and disaster relief operations for global hazard events. With a proven ability to effectively respond to urgent requests by providing maps and online tools, PDC has defined itself as a dependable and trusted partner in worldwide disaster response.



Flooded areas in eastern Metro-Manila, Philippines in 2009.

## The Philippines: 2009 Super Typhoons

In fall 2009, two back-to-back super typhoons in the Pacific caused catastrophic flooding and loss of life in the Philippines. In late September, Typhoon Ketsana triggered massive flooding in Manila. Ketsana was followed immediately by Typhoon Parma, which battered the northern part of Luzon island. PDC deployed staff to work with the Philippines Office of Civil Defense, the U.N., and international disaster relief organizations to produce maps to be used in allocating rescue and recovery resources. PDC also helped provide a communication link between the U.N. On-Site Operations Coordination Center and U.S. responding agencies.

## HOW CAN PDC HELP YOU?

PDC will listen to your needs, help identify gaps, and assist in crafting right-sized disaster management solutions.

### We Offer:

- Early warning, risk assessment, and modeling and visualization solutions
- Training and strategic advisory services
- Assistance in identifying funding sources or support partners
- Online technologies to efficiently deliver services and support sustainability



Phone: + 1.808.891.0525

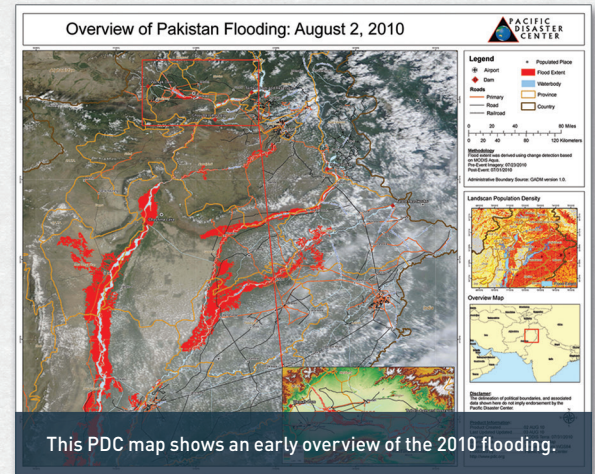
Email: [info@pdc.org](mailto:info@pdc.org)

Web: [www.pdc.org](http://www.pdc.org)

Follow Us: [t](https://twitter.com/disasteraware) & [f](https://facebook.com/disasteraware) /disasteraware



PDC is an applied science, information and technology center, established by the U.S. Government in 1996, currently managed by the University of Hawaii.



## Pakistan: 2010 Major Flooding

In 2010, heavy monsoonal rains in Pakistan triggered the country's worst flooding in recent memory, killing over 1,700 people and leaving one-fifth of Pakistan's land area under water. PDC analysts monitored the floods and provided assessments and maps to agencies involved in planning, managing, and coordinating response efforts. PDC also created an online Pakistan Flood Relief Map Service, which consolidated many information products in one location for ease of use by the relief agencies.

## PDC has supported major disaster events worldwide, including:

- Japan earthquake and tsunami (2011)
- Pakistan flooding (2010)
- Chile earthquake (2010)
- Haiti earthquake (2010)
- Philippines super typhoons and flooding (2009)
- American Samoa tsunami (2009)
- Solomon Islands earthquake and tsunami (2007)
- Philippines, Mayon Volcano eruptions (2006, 2008, 2009-10)
- USA, Hurricane Katrina (2005)
- Great Sumatra Earthquake and Indian Ocean Tsunami (2004-2005)

