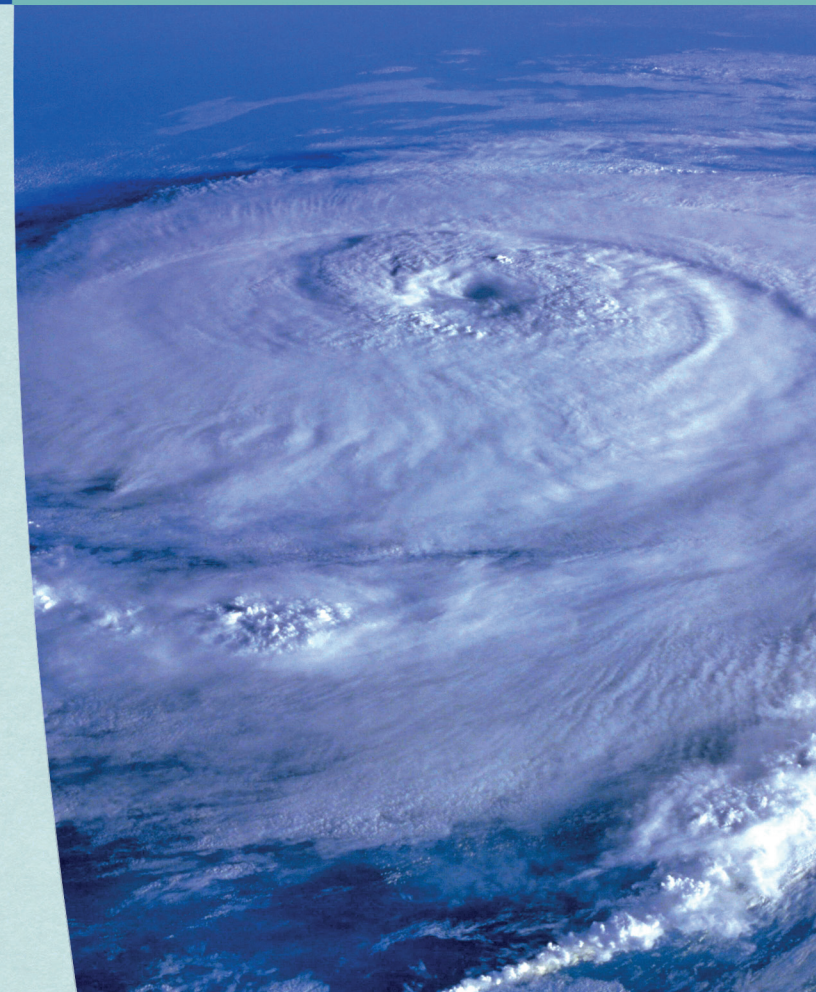


# GLOBAL HAZARDS ATLAS



## Visualizing Hazards. Fostering Resilience.

Pacific Disaster Center's Global Hazards Atlas is a powerful GIS-based tool for efficient hazard assessment and early warning, as well as response and recovery operations. Powered by PDC's decision support platform, DisasterAWARE, the Atlas collects and consolidates historical and real-time information on natural hazards around the globe, including tropical cyclones, volcano eruptions, earthquakes, tsunamis, floods, and wildfires. By combining this information with data on population and infrastructure, the Atlas provides users with a better understanding of current hazards and their potential impacts.





# ONE-STOP HAZARD INFORMATION

## Integrating Trusted Data Sources

The Atlas collects and consolidates data from trusted sources including NOAA, NASA, U.S. Geological Survey, and the Smithsonian Institution's Global Volcanology Program

## Powered by DisasterAWARE

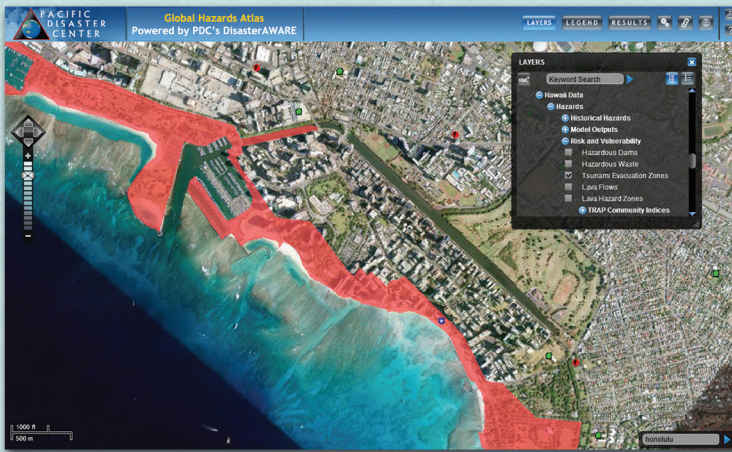
Information in the Atlas is generated by PDC's decision support platform, which includes hazard model outputs, weather observations and forecasts, high-resolution satellite imagery, and situational awareness information.

## Publicly Accessible

Access to the Atlas is free and requires only a standard Internet browser.

## Easy to Use and Versatile

The Atlas provides information relevant to a wide range of users, including disaster managers, humanitarian assistance organizations, educators, students, and the general public.



*This Atlas map displays an area on the island of Oahu, from the north end of Waikiki to west of Kewalo Basin. The red area along the coast indicates Hawaii's designated tsunami evacuation zone. Also displayed are the locations of services an evacuee may need, such as hospitals, shelters, and police and fire stations.*

## HOW CAN PDC HELP YOU?

PDC will listen to your needs, help identify gaps, and assist in crafting right-sized disaster management solutions.

### We Offer:

- Early warning, risk assessment, and modeling and visualization solutions
- Training and strategic advisory services
- Assistance in identifying funding sources or support partners
- Online technologies to efficiently deliver services and support sustainability

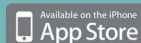


Phone: + 1.808.891.0525

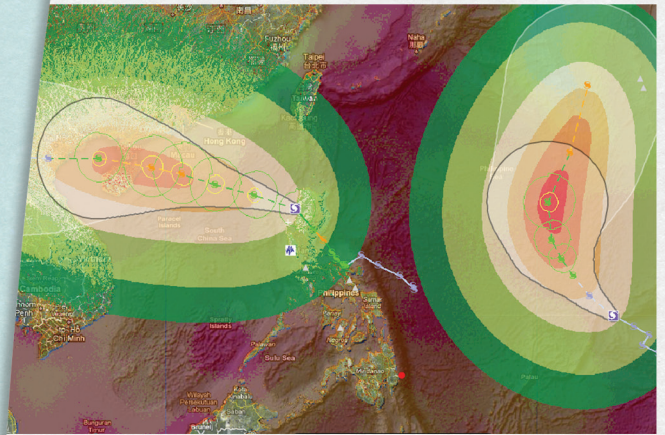
Email: [info@pdc.org](mailto:info@pdc.org)

Web: [www.pdc.org](http://www.pdc.org)

Follow Us: [t](https://twitter.com/disasteraware) & [f](https://facebook.com/disasteraware) /disasteraware



PDC is an applied science, information and technology center, established by the U.S. Government in 1996, currently managed by the University of Hawaii.



*This Atlas image shows the storm tracks of Tropical Cyclone Nock-ten and Tropical Cyclone Muifa, which struck the Philippines in early August 2011. The colored rings indicate predictive rainfall totals, generated by the TAOS™ model.*

## Timely Answers to Urgent Questions

The Atlas can help answer the most pressing questions throughout all phases of disaster management.

- What hazards are likely to occur in a specific region, and how intense are the events likely to be?
- What hazards are currently happening, and where are the impacts?
- How many people are likely to be affected? Are lives at risk now?
- What is the potential impact on critical infrastructure in the area?
- What is the most effective staging area for relief supplies and services?
- Is it appropriate to issue a warning or initiate an evacuation now?

